

STUDENT RESOURCE GUIDE

**JOHNSON & WALES UNIVERSITY
CHARLOTTE**

STUDENT RESOURCE GUIDE

**JOHNSON & WALES UNIVERSITY
CHARLOTTE**



CHARLOTTE CAMPUS

801 W Trade Street
Charlotte, NC 28202

NEW STUDENT ORIENTATION

Phone: 980-598-1880

Email: orientation.clt@jwu.edu



TABLE OF CONTENTS

2 A MESSAGE FROM THE DEAN OF STUDENTS

STUDENT RESOURCES

3 20 WAYS TO WILDCAT

4 PREPARING FOR COLLEGE LIFE: TIPS FOR NAVIGATING YOUR NEW CHAPTER

6 NEW STUDENT CHECK LIST

6 EXPLAINING HOLDS

7 NEW STUDENT ORIENTATION

8 FIRST YEAR & NEW STUDENT CHECK IN

8 WILDCAT WELCOME

9 CAMPUS ACRONYMS

9 FAMILY EDUCATIONAL RIGHTS & PRIVACY ACT

ACADEMIC RESOURCES

10 ADACEMIC OVERVIEW

14 ACADEMIC RESOURCES

16 EXPERIENTIAL EDUCATION & CAREER SERVICES

16 FINANCIAL RESOURCES

CAMPUS LIFE

18 RESIDENTIAL LIFE

19 LIVING LEARNING COMMUNITIES

20 ROOM SELECTION

21 CAMPUS DINING

22 PARKING & TRANSPORTATION

23 CAMPUS SAFETY & SECURITY

24 STUDENT CONDUCT

24 GETTING INVOLVED

25 STUDENT ENGAGEMENT

26 FAMILY & FRIENDS WEEKEND

26 HOMECOMING

27 HEALTH & WELLNESS

A MESSAGE FROM THE DEAN OF STUDENTS



Dear JWU Charlotte Students,

Welcome to the JWU Charlotte family! Starting college is a huge milestone filled with excitement, challenges and new opportunities. We're thrilled to have you here, as you embark on this journey with us.

College is one of the most transformative experiences in your life, and we're committed to supporting you every step of the way. Our team is here to help you navigate campus policies, connect with resources and take advantage of programs that spark your growth. Life at JWU Charlotte will present both opportunities and challenges, but you won't face them alone. Student Affairs will partner with you as you progress toward graduation and prepare for your future career.

This is your time to take charge of your development, and we encourage you to make the most of the resources available to you. Whether it's academic support, resolving conflicts or personal growth, there are people and services here to help you thrive. Embrace the chance to become more independent, but don't hesitate to reach out when you need guidance.

Stay connected! Follow the JWU Charlotte Facebook page, JWULink and other university platforms to stay in the loop on events, updates and important announcements. Be sure to attend campus events like New Student Move-In, Friends and Family Weekend, athletic events, Homecoming and other exciting activities happening throughout the year.

We're excited to see all you'll accomplish during your time here. Student Affairs is proud to play a role in your journey, and we look forward to celebrating your successes along the way. Let's make this year unforgettable as you grow, learn and thrive at JWU Charlotte!

With gratitude,

A handwritten signature in black ink that reads "Dena K. Warren, M.Ed." in a cursive script.

Dena K. Warren, M.Ed.

Dean of Students - Charlotte Campus

20 WAYS TO WILDCAT!

COMMUNITY SHOW UP!

- 1 Welcome incoming students at Ignite the Night
- 2 Join a student organization and/or fraternity or sorority
- 3 Participate in FallFEST, WinterFEST and SpringFEST activities
- 4 Attend a campus Career Fair
- 5 Win big at a Campus Activities Board (CAB) BINGO night

COURAGE SPEAK UP!

- 6 Get to know your roommate; attend campus activities together
- 7 Meet regularly with your academic advisor, financial advisor and success coach
- 8 Study in the library; ask a librarian to help you find your favorite book
- 9 Get to know your faculty members/mentor; attend faculty office hours
- 10 Participate in annual Student Government Association (SGA) elections; have your voice heard

PRIDE OWN UP!

- 11 Take a selfie with the Wildcat statue and post it on social media; tag @jwucharlotte
- 12 Wear your JWU apparel on every Wildcat Wednesday
- 13 Go to Homecoming Week activities
- 14 Cheer on the Wildcats at regular athletic events
- 15 Get an on-campus job with Student Employment

CHARACTER LIVE IT!

- 16 Learn the history of the JWU founders: Misses Gertrude Johnson and Mary Wales
- 17 Celebrate your achievements at the Graduate Week Cookout & President's Toast
- 18 Check out alumni owned/operated businesses in Charlotte (and around the world!)
- 19 Donate as part of oneJWU: Day of Giving; support future Wildcats
- 20 Recognize the accomplishments of your peers by attending Commencement

PREPARING FOR COLLEGE LIFE: TIPS FOR NAVIGATING YOUR NEW CHAPTER



As you begin this exciting new chapter, don't underestimate the importance of maintaining open communication with your support system back home. The topics below are designed to help you reflect and have meaningful conversations with those closest to you before arriving on campus. Use this guide to set expectations and prepare for the adventures ahead.

COMMUNICATION

Staying connected with your family and friends is key, even as you focus on building your independence. Talk with your support system about how you'll stay in touch. Will you check in daily, weekly or somewhere in between? Will you use calls, texts or social media? It's also important to discuss response times—how quickly do you expect replies, and how flexible can you be with each other's schedules? Setting this foundation now can help avoid misunderstandings later.



PROBLEM SOLVING

College is a time to grow your problem-solving skills, so it's helpful to talk about when and how you might ask for advice. Challenges like roommate conflicts, time management or balancing academics and social life will happen. Consider how your family or support system can encourage you to work through these moments instead of jumping in to solve things for you. Learning to navigate challenges is a vital part of becoming independent.



HOMESICKNESS

It's normal to feel homesick, especially if this is your first time being away from home for an extended period. Missing family, friends or even your pets is completely natural. Before you arrive, think about how you will handle these feelings. Who will you call for comfort, and what steps can you take to stay involved on campus? Getting connected with clubs, talking to your resident assistant or visiting Counseling Services can help you adjust and find your place.

GRADES

College academics can feel like a big adjustment. What earned you an A in high school might not translate the same way in college. Have an honest conversation with yourself and your family about academic expectations. What goals do you have for grades and study habits? More importantly, how will you define success beyond just letter grades? Take advantage of resources like the Academic Success Center and stay proactive about asking professors for help when needed.

SAFETY AND WELLNESS

Living on your own and exploring college life can be exciting, but it also comes with responsibilities. Think about how you will prioritize your safety and well-being. Be mindful of topics like alcohol, drugs, using the buddy system, dating, relationship dynamics and self-care. Make a plan to manage stress, get enough sleep, and seek help when needed. Campus resources like counseling, health services and safety and security programs are here to support you—do not hesitate to use them.

EMBRACING NEWFOUND FREEDOM

College gives you the freedom to set your own schedule, make decisions and discover who you are. Unlike high school, where your time was highly structured, now you will decide everything from when to eat and sleep to how much time to dedicate to homework or leisure. As you adjust, be patient with yourself and stay flexible. Building a routine that balances your priorities might take some trial and error, but trust yourself to figure it out.

INVOLVEMENT

College is the perfect time to step out of your comfort zone and meet new people. Make the most of campus life by attending events, joining clubs and exploring student organizations. Charlotte also offers plenty of opportunities to discover new interests and make connections outside of campus. Stay curious and keep putting yourself out there—you never know what opportunities might come your way!

Your college experience is what you make of it. Embrace this exciting new chapter with an open mind, a positive attitude and the determination to succeed. You've got this!





NEW STUDENT CHECKLIST

- ☐ Complete FASFA and apply for financial aid.
- ☐ Pay Deposit
- ☐ Complete online placement testing (check Wildcat email for instructions).
- ☐ Attend New Student Orientation.
- ☐ Submit health forms and immunization records.
- ☐ Complete financial obligations.
- ☐ View invoice.
- ☐ Discuss payment options with a planner.
- ☐ Make tuition payment.
- ☐ Waive health insurance (optional).
- ☐ Apply for on-campus housing (residential students only).
- ☐ Select room (residential students only).
- ☐ Select a meal plan.
- ☐ Take the alcohol and sexual assault education course (check Wildcat email for instructions).
- ☐ Submit final, official high school transcript.
- ☐ Discuss FERPA and Authorized User.

EXPLAINING HOLDS

A hold is placed on your account when students are not in compliance with payment deadlines, semester start requirements or university policy. Holds will prevent a number of activities, including (but not limited to) course registration, entry to class, graduation and transcript requests. Students are advised to review holds in jwuLink frequently, especially after each semester's deadline for completing semester start requirements and before the start of each semester. Holds that need to be cleared before move in/ first day of classes are:

Resident Student

- Financial Hold
- Health Services
- Final Transcripts
- JWU ID
- Parking Pass
- Residential Life

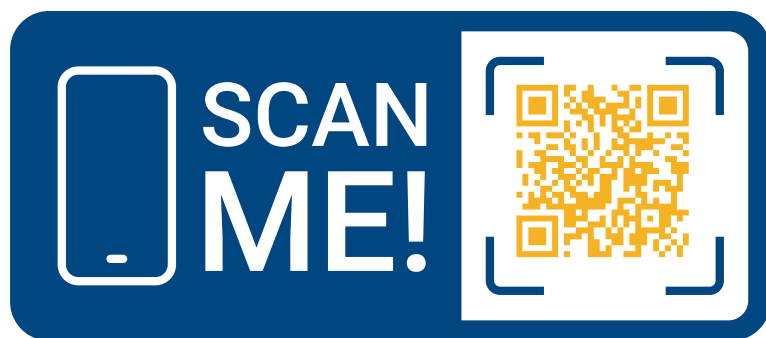
Commuter Student

- Financial Hold
- Health Services
- Final Transcripts
- JWU ID
- Parking Pass

NEW STUDENT ORIENTATION

We are so excited that you've chosen Johnson & Wales University Charlotte! Now that you have secured your spot, it's time to begin planning for your required Orientation. This two-day overnight or one-day experience will likely be lots of fun -- and your family and guests are invited to join as well!

Soon, JWU Charlotte will be your home — and we can't wait to welcome you! Join us for Summer Orientation, a can't-miss event where you will learn about being a Wildcat, including: what it's like to live on or commute to campus, how to get involved with student organizations, what are academic expectations and keys to classroom success, and how to find people, places and resources here to help you!



HOW TO REGISTER FOR ORIENTATION

Your first-year and new student deposit of \$300 must be paid before you can register. We also encourage you to complete your FAFSA! To register for a session, please log into jwuLink and utilize your task list.

PREPARE FOR ORIENTATION

- Review your jwuLink task list.
- Prepare questions for campus resources you will meet during orientation.
- Complete placement testing. The exam is done online over the summer. If you have questions or concerns please reach out to Student Academic Services at 980-598-1330 or via email sas.clt@jwu.edu.



FAMILIES & GUESTS

Orientation isn't just for you—it's for your family and support systems, too! We know you (and they) probably have tons of questions, so we've planned sessions tailored to both groups. While you're diving into what it means to be a Wildcat, your family or guests will attend separate sessions designed specifically for their needs.

When you register for your orientation, you will also have the opportunity to register two guests. Each guest will be charged a fee of \$25.00 upon registration. It's a great way to make sure everyone feels prepared and excited for this next chapter of your journey. Let's get ready to start strong together!

FIRST YEAR & NEW STUDENT CHECK IN

The day you have been anticipating, dreaming about and maybe even stressing over is finally here—check-in day! This is an exciting time to start your JWU journey, and we want to make it as smooth and memorable as possible. Here are some tips to get you started:

- **Refer to your JWU email for Check In Details:**
 - Residential Students: Be sure to read the information Residential Life sends to your JWU email, including your room assignment and your specific move-in time.
 - Commuter Students: Be sure to read the information Admissions sends to your JWU email, including your specific check-in time.
- **Follow Campus Directions:** JWU uses special driving and parking plans during check-in. Campus Safety & Security will direct you when you arrive, so please stick to your assigned time and follow their guidance.
- **Get Moving:** As soon as you pick up your room key, start moving your stuff into your new space.
- **Bring the Right Tools:** Many students and families bring hand trucks, rolling containers or other moving tools to make the process easier. Work smarter, not harder!
- **Dress for the Day:** Plan for the weather and wear comfortable clothes and shoes—you'll be walking a lot as you settle in.
- **Ask for Help:** Staff members will be stationed around campus to answer questions and assist you, so don't hesitate to reach out if you need guidance.

WILDCAT WELCOME

Wildcat Welcome isn't just about unpacking your bags—it's the kickoff to an incredible new chapter in your life! Your first weekend on campus is all about diving headfirst into the vibrant JWU community. From exploring our core values to discovering endless opportunities, this weekend is designed to help you embrace your new role as a Wildcat. With breakout sessions, social activities, and exciting events, you'll start building connections, making friends and settling into your new home away from home.

You won't be doing this alone. You will be surrounded by peers, staff and faculty who are genuinely passionate about helping you succeed and grow. At JWU, we're not just a university—we're a supportive, dynamic community that's committed to helping you thrive.

So pack your bags, bring your excitement, and get ready to kick off an unforgettable journey. Your Wildcat adventure starts now, and it's going to be one for the books!

#JWUAdventure #NewBeginningsAtJWU



CAMPUS ACRONYMS

Academic Center (AC)	Free Application for Federal Student Aid (FAFSA)
Academic Success Center (ASC)	Gateway Center (GWC)
Baking & Pastry Arts (BPA)	Gateway Village (GWV)
Cedar Hall North (CHN)	Graduation Planning System (GPS)
Cedar Hall South (CHS)	Information Technology (IT)
Charlotte (CLT)	New Student Orientation (NSO)
College of Arts & Sciences (COAS)	Predominantly Black Institution (PBI)
College of Business (COB)	Resident Assistant (RA)
College of Food Innovation & Technology (CFIT)	Student Academic Services (SAS)
College of Health & Wellness (COHW)	Student Financial Services (SFS)
College of Hospitality Management (COHM)	Transfer Equivalency System (TES)
Experiential Education & Career Exploration Services (EECS)	University Events Center (UEC)

FAMILY EDUCATIONAL RIGHTS & PRIVACY ACT

The Family Educational Rights and Privacy Act (FERPA) is a federal law that, among other things, protects the privacy of student education records. The law applies to all schools that receive funds under an applicable program of the U.S. Department of Education.

As a college student, you're now in control of your education records, thanks to FERPA (the Family Educational Rights and Privacy Act). In high school, both you and your parents had access to your educational records, but once you turn 18 or attend college, those rights transfer fully to you.

This means your parents won't automatically have access to your academic progress or other records without your written consent. At JWU, you can grant specific access to parents or other individuals by designating them as an Authorized User through jwuLink.

Here's how it works:

- You choose what information your Authorized User can view by selecting from a list of authorizations in jwuLink.
- Authorized Users can only see the information in a view-only format—they cannot update your records or request documents.
- If your parents or others need information about your education records, they should consult with you directly.

For more details about Authorized Users and step-by-step instructions, check out the resources available on jwuLink. Taking charge of your education records is an important step in becoming more independent, and JWU is here to help you manage it confidently!

ACADEMIC OVERVIEW: UNDERGRADUATE

At JWU, you jump right into your major from day one! This means you will spend your time in college gaining hands-on experience and building skills that directly align with your personal and professional goals. Every class and opportunity is designed to help you grow, build your resume, and bring you closer to achieving your dreams.

CLASS LEVEL

The following criteria determine a student's class level based on quarter credit hours earned:

YEAR	CREDITS
Freshman	0-23.99
Sophomore	24-56.99
Junior	57-89.99
Senior	90 credits and higher

ACADEMIC GRADING SYSTEM

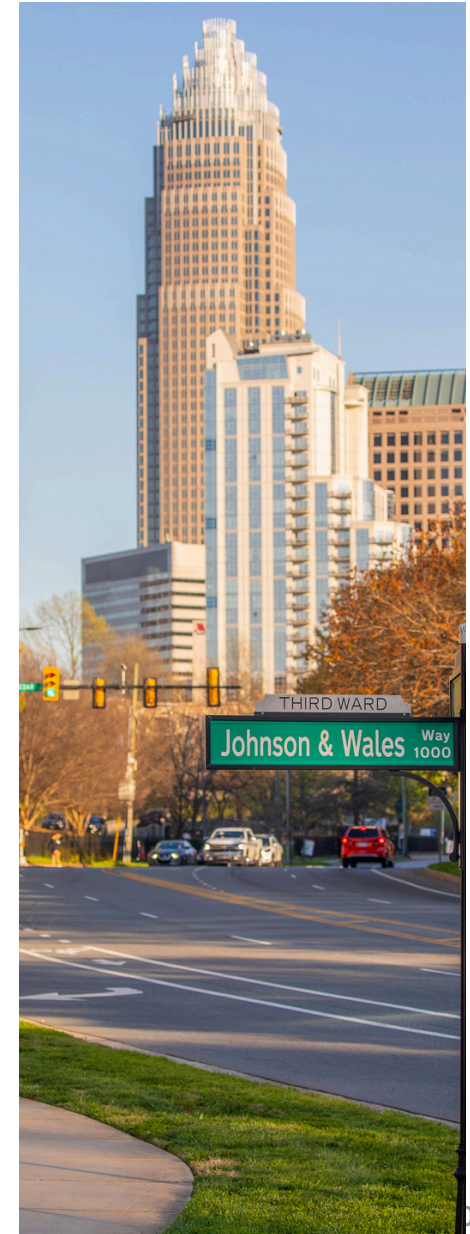
The grading system at the undergraduate level is as follows:

GRADE	SCORE	GPA
A+	95-100	4.00
A	90-94	4.00
B+	85-89	3.50
B	80-84	3.00
C+	75-79	2.50
C	70-74	2.00
D+	65-69	1.50
D	60-64	1.00
F	0-59	0.00

ACADEMIC GRADE ABBREVIATIONS

The grading system at the undergraduate level is as follows:

W	Withdrawal
I	Incomplete
NC	No Credit
NG	No Grade
GP	Grade Pending
P	Pass
PL	Prior Learning Assessment
S	Satisfactory
U	Unsatisfactory



THE SPECIAL HONORS AND REWARDS PROGRAM (SHARP)

The Special Honors and Rewards Program (SHARP) is designed to allow qualifying undergraduate program students* to accelerate the completion of their degree requirements in less than the normally prescribed time. This is accomplished by giving eligible students the ability to register up to 21.0 credits each semester with no additional tuition fees. SHARP offers the potential for students to save time and expenses.

To be eligible for SHARP, the student must have completed at least one semester of classes at JWU and have a cumulative GPA of 3.60 or higher.

If this criteria is met, the student's maximum allowable registration credits will reflect 21.0 for the next semester.

If this criteria is not met, the student's maximum allowable registration credits will remain at 18.0.

If a student is or becomes SHARP-ineligible at the end of a semester, they may become SHARP-eligible any time in the future provided they meet the 3.60 cumulative GPA requirement at the end of a semester.

Students registered for 21.0 credits who become SHARP-ineligible for the next semester will be notified via their JWU email account. It is the student's responsibility to drop extra credits if registered, to avoid incurring additional charges.

Students who are SHARP-eligible may utilize this benefit at any time of their choosing (or not at all) and should note the following before proceeding.

1. Accelerating the completion of program requirements may impact future enrollment (e.g., part-time enrollment) and course sequencing).
2. Semester course offerings may not allow or guarantee accelerated program completion.
3. To plan effectively, course projections must be reviewed carefully and students should work closely with their academic counselor/advisor.

*Graduate or Evening students are not eligible for SHARP.



LATIN HONORS

The following honors are issued upon graduation, based on individual GPAs:

- Cum Laude, 3.50-3.69
- Magna Cum Laude, 3.70-3.89
- Summa Cum Laude, 3.90-4.00

ADD DROP POLICY

Add/Drop is defined as adding and dropping any number of courses but maintaining active registration in at least one other course in the semester and Add/Drop deadlines are outlined on the academic calendar. For courses offered on campus students may add or drop a course by the following deadline:

- College of Food Innovation & Technology labs (that meet twice a week or consecutively):
 - Add/Drop Deadline: Thursday week 1 of the semester.
- All other courses:
 - Add/Drop Deadline: Thursday week 2 of the semester.

While some classes including culinary or baking and pastry laboratory classes begin later than the first week of classes, the Add/Drop period at the beginning of the semester applies to all classes regardless of the start date of the lab or course. If a student does not drop a lab or course during the Add/Drop period, full tuition charges will be assessed.

For online and hybrid courses, students may add a course by the first Saturday of the course session or drop by the second Saturday of the course session. An official add or drop must be completed via jwuLink or with Student Academic Services.

Whenever students participate in add/drop, their financial aid and account charges may be adjusted. Financial aid cannot be used to pay for classes that do not count toward degree requirements (i.e., an "unused" course). In the event students remain registered for an unused course during the semester, their net tuition expense could be higher, resulting in a balance on their invoice. Students are encouraged to visit or consult Student Financial Services to review the potential impact, especially if their enrollment status changes to or from part time/full time.

When students drop a course during this time, the course is removed entirely from their schedule (there is no record of the course on the academic transcript), and if the course becomes closed it may not be added back to their schedule. Most importantly, students are strongly advised to stay on track and maintain their graduation date, especially to avoid incurring unnecessary financial debt. Learn more about repaying loans (start dates, repayment options, avoiding default) and review debt management resources on the U.S. Department of Education's federal student aid website.



COURSE WITHDRAWAL

If a student drops a course after the add/drop period has ended, the process is referred to as a Course Withdrawal. Students may withdraw from a course by completing a Course Withdrawal Form with Student Academic Services or Online Student Services. A grade of W will be issued for each withdrawn course and recorded on the transcript as attempted credits. This grade is not calculated in the grade point average. A student who remains enrolled in one or more courses in the semester will not be eligible for a tuition credit. Students who withdraw from all courses will be withdrawn from the university and are subject to the University Withdrawal Policy.

Students must officially withdraw from a course by the course withdrawal deadline; otherwise, they will not be permitted to withdraw from the course and will be graded accordingly.

A withdrawal request after the deadline will only be permitted for extenuating conditions beyond the student's control. Students must provide documentation of the condition, which must be approved by an academic advisor/counselor. The course grade under these circumstances will be no credit (NC).

Withdrawal deadlines for academic courses and courses with an experiential education component are published on the academic calendar available on the JWU website.



ACADEMIC SUCCESS

The academic rigor and classroom expectations are different in college than they are in high school.

- **Attend class regularly.** Most of what you'll learn happens in class. Lectures, discussions, and activities often lead to exam material.
- **Read the entire syllabus.** Your syllabus is like an academic contract. It outlines what's expected and how your grades will be determined.
- **Manage your time effectively.** College life can be unstructured and full of distractions, so use an academic planner or calendar to stay on top of assignments and deadlines.
- **Get to know your professors.** Introduce yourself after class or drop by during office hours to build a connection.
- **Ask for help.** If you have questions or need support, talk to your professors early and visit the Academic Success Center for tutoring when needed.



ACADEMIC RESOURCES

STUDENT ACADEMIC SERVICES

Student Academic Services (SAS) ensures the accuracy, integrity and security of academic records in compliance with institutional policies, as well as related state and federal laws and regulations. In addition, SAS helps students to achieve their educational goals, transition to new academic and social communities, develop sound academic and career goals, and, ultimately, become successful learners. The team members in SAS provide a variety of services that support our university community's students, faculty and staff.

Our core functions are:

- Academic advising
- Catalog and Handbook Production
- Course inventory administration
- Course scheduling
- Degree audit configuration
- Degree conferral
- Diploma services
- Document management
- Enrollment certification
- Grade processing
- Registration
- Room scheduling
- Student academic records
- Transcript services
- Transfer credit evaluation
- University academic calendar
- Veteran certification

INFORMATION TECHNOLOGY

Information Technology (IT) provides technology tools, services and support to the university community. Services offered include help with Wildcat email, software and hardware discounts, computer labs, complimentary printing, internet and Wi-Fi, gaming, and mobile apps. For answers to frequently asked questions, visit it.jwu.edu.

ACADEMIC SUCCESS CENTER

The Academic Success Center (ASC) is here to help you succeed with resources like tutoring, academic coaching, and writing support. You can meet with a tutor in person or use Tutor.com, an online service available 24/7 through jwuLink.

The Academic Success Center also offers Accessibility Services to ensure students with disabilities have equal access to academic success. If you need accommodations, schedule a meeting with the Assistant Director of Accessibility Services to discuss any disability-related challenges you may face.

Disclosing a disability to Accessibility Services is entirely voluntary, but you must self-disclose if you want to receive accommodations. To apply, provide current documentation of your disability and complete the application for accommodations on the website below. Keep in mind that family members cannot request accommodations or support on your behalf unless you share the information with them. For details, visit academicsupport.jwu.edu/charlotte.

LIBRARY

The JWU Library is your ultimate resource for research, study and academic support. With access to over 100,000 books, videos, and journals, as well as more than 80 research databases featuring e-books, reports, streaming videos and more, you'll find everything you need to succeed. The library offers technology such as Macs, PCs, printers, scanners and campus Wi-Fi to keep you connected. Whether you prefer quiet areas for individual study or collaborative spaces for group work, there's a spot for you. Friendly librarians are also available to provide research assistance both online and in person. Open six days a week, the library hosts monthly programs for the campus community. For more information, visit clt.library.jwu.edu.

BOOKSTORE

The campus bookstore, located on Trade Street, makes it easy to get everything you need for class. You can buy used textbooks, rent them or choose digital versions, all with price matching to keep things affordable. In addition to academic essentials, the bookstore offers a great selection of Wildcat spirit gear, merchandise and gifts to show off your JWU pride. For more information or to place orders, visit jwubookstore.com. With these resources at your fingertips, you'll be ready to make the most of your academic experience at JWU!



TIME MANAGEMENT & PROCRASTINATION

College life comes with way more flexibility compared to high school. You'll spend less time in class and more time working on your own assignments. While this freedom is exciting, it can also make managing your schedule tricky. Here are some tips to help you stay organized and steer clear of procrastination:

- Use a timesheet or planner to map out your regular activities like classes, work, sleep, hobbies, and homework. This allows you to identify when you have free time.
- Keep a daily, weekly, and monthly calendar to stay on top of assignment deadlines and prep for tests.
- Meet with an Academic Success Coach to sharpen your time-management skills, improve study habits and more!

EXPERIENTIAL EDUCATION & CAREER SERVICES

Experiential Education & Career Services (EE&CS) helps connect your general education, professional skills, and career goals. They provide tailored services to guide you in making smart career choices, finding internships, securing jobs, and navigating your career path.

EE&CS offers career advising, workshops, resume reviews, mock interviews, internship guidance, career fairs and on-campus interviews. Whether you are a first-year student or upperclassman, you can visit EE&CS for help creating or updating your resume, finding part-time work and accessing our Handshake platform for job and internship listings. Check out jwuLink for the latest updates and resources!

FINANCIAL RESOURCES

STUDENT FINANCIAL SERVICES

JWU offers different types of financial assistance to help students cover educational costs, including scholarships, grants, low-interest loans and federal work-study. Most students receive a financial aid package that combines these resources. JWU financial planners can guide you through the Free Application for Federal Student Aid (FAFSA). To continue receiving financial aid, students need to reapply every year, starting as early as December 1. Financial planners can also help with payment options for any remaining expenses after financial aid, including payment plans and loan options.

You can view invoices, financial aid awards and holds through your jwuLink account. It's important to clear any financial holds every semester and meet payment deadlines to secure your course schedule. Families can get access to your account by becoming an Authorized User. You can choose what information they can see and decide whether to give access to a parent or guardian.

iGRAD

JWU is here to help you navigate the world of student loans and borrowing. Student Financial Services teams up with iGRAD, our online financial literacy tool, to guide you through smart financial decisions. With videos, articles and interactive games, you will gain the skills and knowledge needed to make sound credit choices and set yourself up for financial success.

STUDENT EMPLOYMENT

Student Employment gives you the chance to gain valuable, career-focused work experience while earning money. Working at JWU helps you build skills, get exposure to a professional environment and enjoy the convenience of on-campus job locations. If you're awarded federal work-study, you can take on flexible, part-time jobs on or off campus, including community service roles. If you were not awarded work-study award, there are still plenty of other job opportunities available on and off campus.





RESIDENTIAL LIFE

Living on campus gives students an opportunity to experience the best of JWU. Our three residence halls offer suite-style and apartment-style living. All first, second and third year students are required to live on campus (with some exceptions). All rooms feature an extra-long twin bed, desk, chair, dresser, and closet/closet space. Students should visit [jwuLink](#) for a list of recommended items to bring.

RESIDENCE HALL ADDRESS

Want to receive mail to your residence hall? Once you arrive to campus, you will receive a mailbox assignment for use during the entire academic year, even if you move rooms or buildings. Be sure to share this mailing address with your friends and family.

Example:

Student Name
Residence Hall Name
Residence Hall Address
City, State, Zip Code

Cedar Hall North Address

215 S. Cedar Street
Charlotte, NC 28202

Cedar Hall South Address

215 S. Cedar Street
Charlotte, NC 28202

The Maple Address

215 S. Cedar Street
Charlotte, NC 28202



SHARING A ROOM

At times, students may experience a challenging situation with a roommate, especially if they have never shared a room. If you experience a conflict with their roommate, we suggest the following tips:

- Encourage open and respectful communication about the present issues.
- Refer to the roommate agreement students fill out and sign at the beginning of the year; look back to what you agreed on and consider whether there might be a need for change (cleanliness, noise, guests, etc.).
- Speak with hall staff- resident assistant, graduate assistant or area coordinator.

LIVING LEARNING COMMUNITIES (LLC)

Here at Johnson and Wales University Charlotte being part of a community is about making connections with others who have common interests. Living Learning Communities (LLCs) bridge student's academic interests and goals with their residence hall living experience.

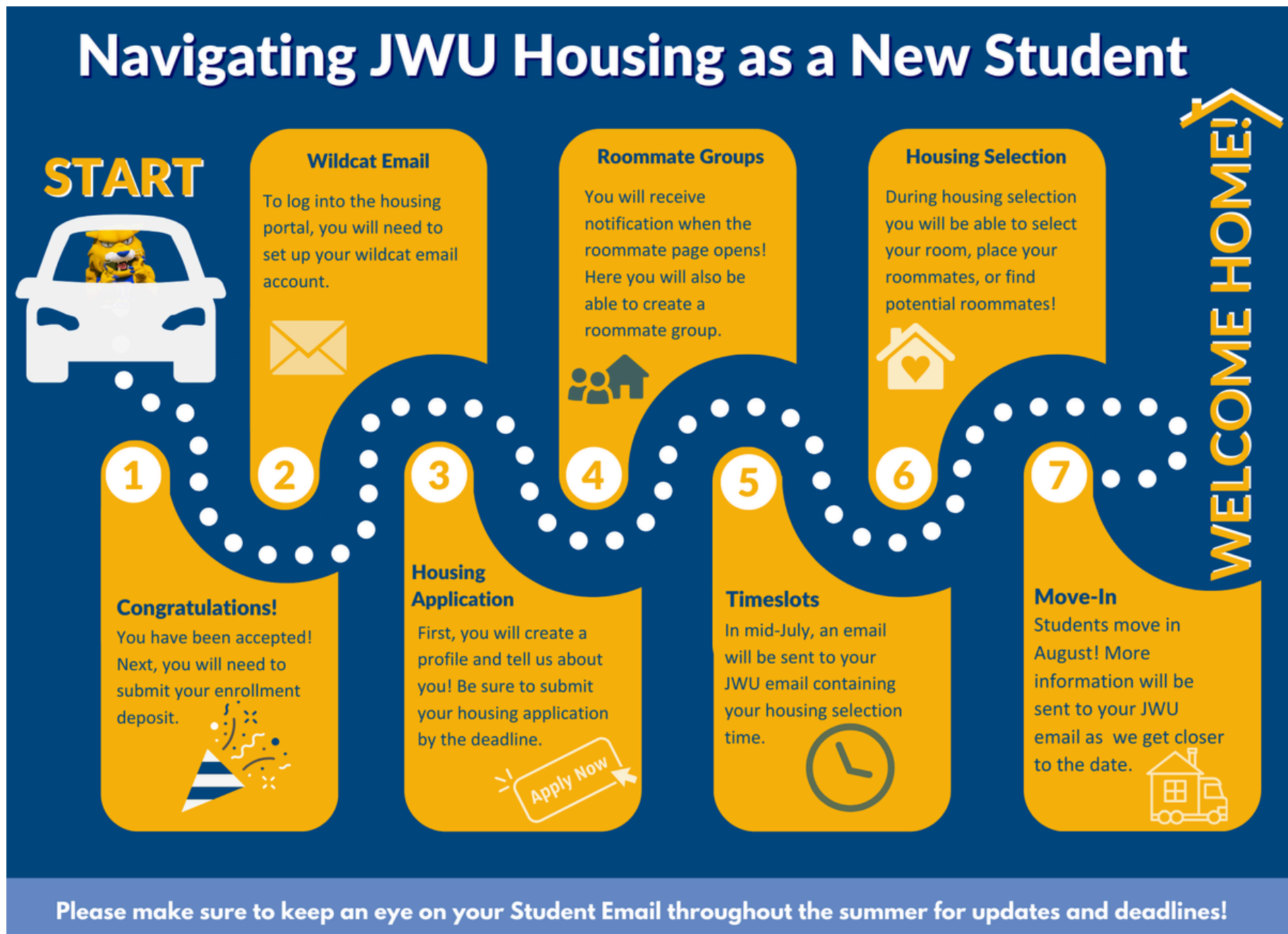
LLCs involve undergraduate students who live together in our residential communities and participate in academic and extracurricular programming especially designed for them. LLCs are sponsored by academic programs and are housed in the residential community. Students with common academic interests live together in the same community and develop personal and academic relationships with other students and faculty from a field of study. Students participate in and out of the classroom enrichment activities that support their academic pursuits. For more information about LLC's please scan the QR code below.



ANTICIPATED OUTCOMES FROM JOINING AN LLC

- Students will create and maintain a socially supportive environment through their interactions both in the LLC and during organized activities.
- Students will work collaboratively and across disciplines on projects that will benefit their academic/professional portfolio while simultaneously supporting positive change in their communities.
- Students will facilitate meaningful personal interaction among students, faculty and staff outside of the traditional classroom.
- The LLC will build a nurturing and welcoming atmospheres to increase learning and student retention.

ROOM SELECTION PROCESS



Please make sure to keep an eye on your Student Email throughout the summer for updates and deadlines!

CAMPUS DINING

JWU Campus Dining is all about serving high-quality, simple and diverse meals that meet student's nutritional needs. Meals are available seven days a week for convenience.

Campus Dining also accommodates various dietary needs, including vegan, vegetarian and other food restrictions. For more info, reach out to the Director of Campus Dining via email, contact info is located on their website listed below!

RESIDENTIAL MEAL PLANS

If you live on campus, you will choose from a variety of Wildcat Meal Plans (14, 18, or All Access). All plans include flex dollars, which you can use at vending machines across campus. The cost of your meal plan is added to your student account, and you will select your plan for the academic year during the room selection process.

- Meal swipes are assigned weekly and expire on Saturday night and reset on Sunday morning.
- Out of swipes? Use flex dollars or credit/ debit cards at venues.
- Out of flex dollars? Students can quickly and easily purchase from our JWU Campus Dining app or website.

COMMUTER MEAL BLOCKS

Meal blocks make it easy to never stress about your next meal. They are designed to fit your needs and are way cheaper than eating out or cooking for yourself. No planning menus, worrying about roommates taking your food or dealing with cleanup—we've got it all covered so you can focus on classes and enjoying college life.

Meal blocks roll over week to week and term to term until the end of the academic year, giving you the freedom to use them whenever you want. Plus, depending on the block size you choose (10, 25, or 50 meals), you'll save money compared to paying the regular door rate.

For details on meal plans, blocks, adding flex dollars, reviewing menus, checking nutrition info, catering options, on-campus jobs, or giving feedback visit dineoncampus.com/jwucharlotte or download the Dine on Campus app. Have questions? Contact Campus Dining at 980-598-1950!



PARKING & TRANSPORTATION



All vehicles parked on JWU Charlotte property must have a current valid permit. For information on current rates please scan the QR code below and visit the Parking Website.



Lot D: Parking Garage

This lot serves all students, employees and visitors. This is the Cedar Street Parking Deck located adjacent to the Academic Center and across the street from Cedar Hall North.

Lot B: Gravel Lot

This lot serves commuter students only. Overnight parking is prohibited.

CHARLOTTE PUBLIC TRANSPORTATION

Charlotte's public transportation, managed by the Charlotte Area Transit System (CATS), offers convenient options for getting around the city. The bus system features over 70 routes, including express services, with real-time tracking available via the CATS-Pass App. The LYNX Blue Line, a 19.3-mile light rail, connects University City to I-485, passing through Uptown Charlotte. The CityLYNX Gold Line streetcar links key neighborhoods and destinations like Johnson & Wales University - Charlotte and Novant Health Medical Center to Uptown. Whether you are commuting, exploring, or catching a flight, Charlotte's transit options help you get there with ease and style!

CAMPUS SAFETY & SECURITY

Campus Safety & Security (CSS) is here to keep JWU a safe and inclusive place for everyone. Officers patrol campus, investigate incidents, maintain emergency plans and alert the community about threats or crimes.

To keep things secure, you'll need your JWU ID to access campus buildings, ensuring only authorized people can enter. CSS also manages Blue Light emergency phones, so you can quickly contact them if you ever feel unsafe. They run a multi-contact emergency message system to deliver critical updates to the entire campus, with alerts also posted on jwuLink.

CSS offers crime prevention programs, manages the Silent Witness Program and provides safe walk escorts if you need someone to accompany you. They're available 24/7 to support a safe and secure campus environment.

LOST & FOUND

Items are held for 90 days. Call about lost items at any time, day or night; however, items can only be picked up Mon-Fri 8am-4pm.

PROJECT ID

To aid in the recovery of lost or stolen items, valuables are engraved with a unique number during a safety event, which is then entered into a database with your information.

SAFE WALK

A student escort service is available so you do not have to walk alone late at night. Safe Walk is available everyday, 6pm-12am on the campus. Call 980-598-1900 for details.

COMMUNICATION

Communication officers answer emergency, non-emergency and business telephone lines at all times. They radio-dispatch security officers to calls for service and monitor alarms for campus buildings.

ACCESS

Should you have any problems accessing our campus facilities or programs please contact our Center for Academic Support or Campus Safety & Security.

CAMPUS SAFETY TIPS

Follow these safety tips to keep you and your Wildcat friends safe:

- Always lock your doors
- Walk in groups whenever possible
- Travel along well-lit, well-populated routes
- Be aware of who and what is around you
- Know locations of Blue Light emergency phones
- Report suspicious activity and/or individuals immediately
- Do not prop doors open or let others "piggyback" into buildings
- Engrave an register valuables with CSS
- Add CSS to your contacts: 980-598-1900



STUDENT CONDUCT

The Student Code of Conduct and the Conduct Review Process exist to help keep JWU a safe, healthy, and positive community for living, learning and working. It's all about creating an environment where everyone acts lawfully, follows university policies, and demonstrates honesty, integrity, civility and respect for themselves, others, and the community. Any behavior that goes against these values—on or off campus—is considered a violation of the Student Code of Conduct.



GETTING INVOLVED

ATHLETICS

JWU Wildcat Athletics strives to provide an exceptional educational experience through a holistic approach where championship intercollegiate athletic competition, intramurals, recreation, fitness and wellness programs are a part of the co-curriculum inspiring professional success and lifelong personal and intellectual growth.



STUDY ABROAD

Study Abroad gives students the opportunity to complete academic credit toward their JWU degree throughout the year, all over the world. By challenging themselves to live and work with people from other cultures, students gain an invaluable global perspective. These experiences help students distinguish themselves from other graduates and even discover new career paths. JWU offers faculty-led programs, JWU semester programs, exchange/ direct enroll programs and affiliate programs.



Many students have the chance to study abroad up to three times during their undergraduate journey. It is never too early to begin exploring these opportunities—students can participate in specialized programs starting in their first year.

Financial aid and scholarships can be used and students may apply for JWU Global Study Abroad Scholarships. Students should attend the biannual Study Abroad Fair, meet with their academic and financial counselors, and visit studyabroad.jwu.edu for more information.

STUDENT ENGAGEMENT

Student Engagement strives to cultivate meaningful experiences to inspire lifelong personal and professional growth. Each student, including yourself, is empowered to embrace and strengthen an inclusive community as well as develop and support programs that promote collaborative learning, character development and social responsibility. Student Engagement delivers a wide range of activities, events, leadership trainings and development programs, while also overseeing more than 30 student organizations, fraternity and sorority life, student government, and commuter student services.

If you are looking to enhance your collegiate experience, make sure to check out the Involvement Network website and phone application (Involve by Modern Campus). The Involvement Network provides up-to-date contact information for each student organization as well as a daily updating calendar of campus events.

Student Engagement encourages each student to attend campus-wide programs, especially:

- Wildcat Welcome Weekend and Weeks of Welcome
- Annual campus celebrations: FallFEST, WinterFEST, and SpringFEST
- Family & Friends Weekend
- Homecoming
- GradWeek!



HOW CAN YOU GET INVOLVED:

- Stay up to date on campus events by being attentive to postings and announcements. Student Engagement promotes weekly and ongoing campus events through the Week-at-a-Glance flyers and posters, the Involvement Network website and phone application (Involve by Modern Campus).
- Find student organizations that spark your interest. If you do not see an organization or activity that interests you, you can work with Student Engagement to get one started.
- Build relationships and network with peers and faculty advisors in student organization settings.
- Participate in leadership training and development programs that are designed to promote self-discovery, interpersonal communication and group leadership and management skills.

Did you know that you earn points for campus event attendance? Most campus events qualify for engagement points that accumulate during your time at Johnson & Wales University, Charlotte. Students who earn 32 points in a singular academic year are recognized, while students who earn 64 or more points during their entire time on campus win prizes and access to exclusive special events.

FAMILY & FRIENDS WEEKEND

Don't miss one of JWU Charlotte's biggest events of the year: Family & Friends Weekend! Whether your loved ones can make it or not, you're welcome to join in on the fun and celebrate with the Wildcat community. Enjoy traditions like hands-on workshops hosted by different departments, sporting events, live music and more. There's a mix of free and ticketed events to make the weekend unforgettable. Plus, it's a great chance to explore Charlotte and everything the Queen City has to offer. For more info, scan the QR code to the right and start planning your weekend!



HOMECOMING

Homecoming is your chance to show off your JWU pride alongside fellow students, alumni, faculty, staff, and the entire community! The week is packed with events hosted by JWU student organizations, departments, and offices making it an unforgettable celebration. Want to take your Homecoming experience to the next level? Get involved by participating in the Homecoming Court and represent your campus in style! For more info, scan the QR code to the left and start planning your homecoming experience!





HEALTH & WELLNESS

COUNSELING SERVICES

Counseling Services is a confidential resource here to support your emotional well-being through short-term individual therapy, group therapy, crisis intervention, consultations, outreach programs, and referrals. Counseling is completely voluntary, and you can schedule an appointment by calling the center. If you need long-term or specialized care, Counseling Services connect you with local resources. For emergencies after 4:30 p.m. or on weekends, you can call 1-888-222-4805 for immediate support.

HEALTH SERVICES

Health Services at JWU Charlotte is here to provide you with comprehensive healthcare right on campus. A team of licensed nurses and nurse practitioners can assess and treat acute illnesses and injuries, verify medical records for admissions and coordinate care for urgent or emergency referrals off-campus. They will also help you schedule specialist appointments, arrange follow-up care and send prescriptions electronically to local pharmacies.

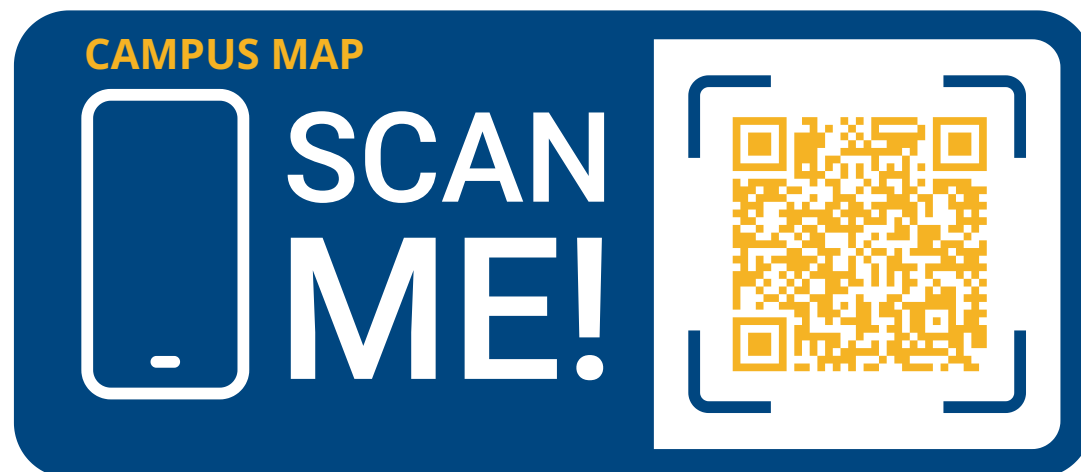
You can also access sexual education, contraception management and STI testing. In partnership with Mecklenburg Health Department, free HIV and STI testing and treatment are available monthly. All services are completely confidential. For off-campus medical needs after hours, you can visit Atrium or Novant Health Urgent Care, local hospitals, the CVS Minute Clinic or call 911 for emergencies. Don't forget to notify Campus Safety & Security for urgent matters after hours.

Taking care of your mind, body and spirit is essential for your success. Health Services offers on-campus programs, preventive education and personalized guidance during each visit. Programs include substance abuse education, smoking cessation, sexual health, eating disorder support, hypertension management, community CPR and lifestyle medicine. Additional workshops and training are available based on student requests.



NOTES & QUESTIONS

NOTES & QUESTIONS

**NEW STUDENT ORIENTATION**

orientation.clt@jwu.edu
980-598-1880

ADMISSIONS

charlotte@admissions.jwu.edu
980-598-1100

ATHLETICS

athletics.clt@jwu.edu
980-598-1840

ACADEMIC SUCCESS CENTER

CharlotteCasStaff@jwu.edu
980-598-1500

COUNSELING SERVICES

counseling-clt@jwu.edu
980-598-1710

HEALTH SERVICES

hcsclt@jwu.edu
980-598-1700

IT SERVICES

it@jwu.edu
1-866-598-4357

RESIDENTIAL LIFE

reslife.clt@jwu.edu
980-598-1800

SAFETY & SECURITY

security.clt@jwu.edu
980-598-1900

STUDENT ACADEMIC SERVICES

sas.clt@jwu.edu
980-598-1330

STUDENT ENGAGEMENT

engagement.clt@jwu.edu
980-598-1888

STUDENT FINANCIAL SERVICES

sfs.clt@jwu.edu
980-598-1100



JOHNSON & WALES
UNIVERSITY

CHARLOTTE CAMPUS

801W Trade Street
Charlotte, North Carolina 28202
www.jwu.edu
866-598-2427